



Cruiser Log

The Newsletter of the North American Cruiser Association

Volume 12, Issue 6

December 2012

IPBA Update

What a great year for International Powerboat Association (IPBA)! With ten of eleven local events completed, the Fall Round-up out of Port Orchard Yacht Club in October will determine this year's IPBA competitor of the year. That skilled navigator will be recognized with the Jerry Bryant Trophy at the association's change of watch and award ceremonies at Gig Harbor Yacht Club in November.

In addition to the eleven local competitions, there are two other events. The West Coast championships, sponsored by Pacific Coast Yachting Association, and the National championships, sponsored by North American Cruiser Association, are held annually in June and August, respectively. Competitors from the Pacific Northwest came very close to sweeping both events.

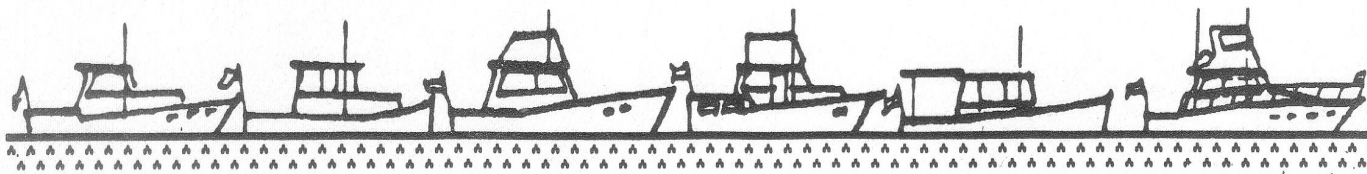
The West Coast championships were held in San Diego, California, this year. The course there works the competitors through San Diego harbor and out into the ocean. With strong winds and heavy seas running, the offshore portion of the race was challenging and uncomfortable. IPBA competitors brought home first and third place, with Bob Lindal of Queen City Yacht Club leading the pack and Fred Cole of Port Orchard Yacht Club in third place. The Castagna team trophy was returned to Queen City Yacht Club through the efforts of Bob Lindal and Bruce Cullen of Meydenbauer Bay Yacht Club.

Inside This Issue:

Who's Who in NACA	2
NACA Objectives	2
Cruiser Log Deadlines	2
Commodore's Corner	3
From the Editor/Publisher	3
Future NAI Schedule	3
Windy Fall Round-up	4
Impossibilities	6
Steam vs. Sail	6
NACA Standings	7
NACA Application	11

In August, North American competitors gathered in Chicago, Illinois, for the North American Invitational, sponsored by Chicago Yacht Club. Representatives from nine associations around the country navigated the waters of Lake Michigan for national honors. It was a clean sweep for IPBA. Leading the pack was Scott Strandjord of Seattle Yacht Club, representing IPBA/Gulf of Georgia. Fred Cole of Gig Harbor Yacht Club, representing IPBA/South, was second, and Bob Lindal of Queen City Yacht Club, representing IPBA/North, brought home the third place trophy. It was an exceptional year for Fred Cole. He and Linda also won the International Cruiser Contest out of Roach Harbor in July.

(Continued on page 5)



North American Cruiser Association

For help or information, visit our web site at
<http://www.predictedlog.org>

It provides a resource for boaters looking for information, to learn more about predicted logging or NACA, or to find a member organization near them.

Feel free to call any of us with your thoughts and ideas!

Commodore

Jeff Calabrese (h) 619.656.8036
 E-Mail: jeff5250@sbcglobal.net

Vice Commodore

John Vignocchi (h) 847.295.7091
 (w) 773.380.0700
 E-Mail: johnv@johnkeno.com

Rear Commodore

Fay Baynard (h) 727.823.3035
 (w) 727.580.1653
 E-Mail: fbaynard@tampabay.rr.com

Secretary/Treasurer

Scott Strandjord (h) 425.449.8445
 (b) 206.819.9732
 E-Mail: scott.strandjord@gmail.com

Jr. Staff Commodore

Craig Ryan (h) 714.434.3941
 E-Mail: his@craigandjan.com

Chairman of the Board

Tom Collins (h) 818.363.6292
 E-Mail: admiral@ktb.net

2012 Directors at Large

Wally Guthrie	SPYC
Lloyd Sergent	CYC
Jim Korzetz	IPBA/North
Mike Elovitz	SDCA

Chief Scorer

Craig Ryan (h) 714.434.3941
 E-mail: his@craigandjan.com

Cruiser Log Editor/Publisher

Elaine Townsend (h) 619.691.0449
 E-mail: thepresence98@yahoo.com

NACA Objectives

The objective of the North American Cruiser Association is to promote the sport of Predicted Log Contests in North America. Pursuant to this objective, NACA will:

1. Publish and distribute a periodic newsletter known as *Cruiser Log*, which shall contain news and information pertaining to the sport.
2. Schedule and coordinate an annual "North American Invitational" (NAI) Predicted Log Contest.
3. Sanction contests of member associations that are to be scored for NACA points.
4. Maintain and publish scoring and standings of Predicted Log contestants participating in NACA sanctioned contests.
5. Provide perpetual and suitable keeper trophies and other awards for winners of such North American Predicted Log series and events as may be established by NACA.
6. Establish "Recommended Contest Rules" for NACA sanctioned Predicted Log Contests.
7. Generally be responsive to the needs and requirements of member associations and of the sport of Predicted Log Contests.
8. Support boating and Corinthian yachting in general.

Cruiser Log Publication Deadlines

Submit by:	For publication in:
January 15	February
March 15	April
May 15	June
July 15	August
September 15	October
November 15	December

If you miss a deadline, your article will be published in a future issue.

Commodore's Corner

Greetings to all from still sunny San Diego.

This will be my last input to the *Cruiser Log* as commodore. I turn the watch over to the capable hands of Vice Commodore John Vignocci and his bridge, effective at the onset of the new year. First and foremost, I want to wish all of you safe and happy holidays and a prosperous (win more races) and have more fun 2013.

This year, 2012, has been a great year for NACA. We are proud to have added Santa Barbara Channel Cruising Association to our roster. We had a highly successful North American Invitational (NAI) in Chicago at Chicago Yacht Club. In addition to coordinating a *super* NAI, VC John Vignocci and his team have re-energized log racing on the Great Lakes. RC Faye Baynard assures us that the sport remains strong in the St. Petersburg area. Additionally, NACA has approved some new, for the betterment of the sport, rule changes with hopes that local organizations will adopt some of them.

The Great Pacific Northwest has stepped up to the plate for the NAI 2013, which will be held in the fall in the Seattle/Tacoma area. NAI 2014 remains locked in for San Diego.

I want to thank my fellow bridge members and especially those in NACA who work "under the radar" to keep our great sport going. If I have missed

any of you, I apologize. Those who immediately come to mind include:

Tom Collins: Chairman of the Board, "The glue that binds NACA together."

Bob Ehlers: Executive Secretary and Treasurer

Craig Ryan: Webmaster and Scorer

Karen Jepsen: Chief Scorer

Elaine Townsend: *Cruiser Log* Editor/Publisher

Tracy Wichmann: Roster Booklet

Bill Stewart: Trophy Coordinator

The racing season is about to end, and trophy results are posted. Congratulations to all winners.

"Vedere te sulle aque."

Jeff Calabrese
NACA Commodore

From the Editor/Publisher

Since I do not want to disturb *Ileina Makai*, my 36-foot Albin trawler, which has been resting peacefully in her slip for the past six years, I have decided to travel the high seas on one of the big cruise ships. Beginning January 2, 2013, I will be out of the country until May, 2013, and not able to edit/publish the next two issues of *Cruiser Log*.

Unless a "guest editor/publisher" volunteers his or her talents, the next issue of *Cruiser Log* will be published in June 2013, with a deadline of May 15, 2013, for articles to be submitted for that issue.

Please send all articles for the February and April issues to Tom Collins at: admiral@ktb.net (with a copy to me, in case there is no such talented volunteer available). You can also contact Tom if you would like to be that very special volunteer.

Elaine Townsend
Cruiser Log Editor/Publisher

FUTURE NAI EVENTS

- 2013—Tacoma, WA (10/05/13)
- 2014—San Diego, CA (08/09/14) *
- 2015—IPBA/North (10/03/15)*
- 2016—SCCA (08/06/16)*
- 2017—St. Petersburg, FL (10/21/17)*

*Tentative dates

A Windy Fall Round-up at Port Orchard Yacht Club

The 2012 International Power Boat Association predicted log navigation contest season ended with weather similar to what the earliest contests of the season experienced – blustery winds and less than calm seas.

The final contest of the season was the Fall Round-up, hosted by Port Orchard Yacht Club (POYC) on Saturday, October 13, 2012. Seventeen contestants ventured from their homeports on Friday into wind gusts approaching thirty knots for the start of the weekend festivities at POYC. Contestants, crews, committee members, and POYC members gathered for some social time in the clubhouse Friday evening to enjoy chili and hot dogs, do a little storytelling, and subtly gather some intelligence on how to deal with the winds expected during the contest the following day.

After Saturday morning check-in and observer assignments in the clubhouse, the contestants moved to the starting point off Annapolis with only about ten knots of wind on their sterns. From Annapolis, the twenty nautical mile course took the contestants through Rich Passage, turning south for a counter-clockwise circumnavigation around Blake Island, with a return back through Rich Passage to the finish point off the East Bremerton gazebo. Despite increasing southerly winds with gusts to thirty knots, all seventeen contestants completed the “cruise” and returned to POYC for log check-in, followed by dinner and contest awards.

Considering the challenge posed by the wind, the resulting scores were quite good, with eight contestants having errors of less than 1.00%. Dick and Sylvia Timmerman of Poulsbo Yacht Club on *Vagabond* cruised to top honors with an error of only

0.3472%. They were very closely followed by Contest Chair Fred and Linda Cole of POYC aboard *Mouse Trap*, scoring 0.3611% error. Rounding out the top three overall finishers were Bob and Sue Lindal of Queen City Yacht Club on *Suzy Q* at 0.6135%. The Poulsbo Yacht Club team of Dick Timmerman, Phil Osterli, Jim Korzetz, and George Gregg took the Top Team Award, with the best four-boat average score of 0.8522%.

This contest capped a very good year for Timmerman, with his winning the first and then the last two contests of season in his 1929 Lake Union Dreamboat *Vagabond*. This contest also closes out a chapter in Pacific Northwest log racing history, with his recent sale of *Vagabond* after more than forty years of ownership, which included almost that many years in log racing. During that time, he won the prestigious National Championship and the West Coast Championship titles multiple times and has always been the odds-on favorite in the IPBA contests. Additionally, this is an excellent example of “newer isn’t necessarily better” in this sport.

The IPBA contest season stretches from January to October each year and provides an excellent opportunity for year-round boating, with an enjoyable social side for meeting a wide range of boaters here in the Pacific Northwest. Many current contestants (Dick Timmerman being one of them) are just waiting to help anyone get started in the sport of navigation contests. For a good start, you can contact Bill Anderson at BigBillAsr@earthlink.net.

Mike Henry
International Power Boat Association

Whenever your preparations for sea are poor,
the sea worms its way in and finds the problems.

– Francis Stokes

For whatever we lose (like a you or a me),
it's always ourselves we find in the sea.

– e.e. cummings

IPBA Update

(Continued from page 1)



Fred and Linda Cole win the International Cruiser Contest

Back at home, after summer cruising and regional contests, Seattle Yacht Club sponsored the annual Stimpson Contest out of their Port Madison outstation. This year's theme was Western-style, so there was a wide array of cowboy hats, Western boots, and square dance dresses.

In addition to their fine hospitality, the Seattle Yacht Club race master put together a challenging and interesting course. With the start at the Port Madison mooring buoy, the course took a counter-clockwise loop about Port Madison and southbound through Agate Pass. The run south in Port Orchard turned back north at Illahee and then back northbound through Agate Pass, finishing at the Port Madison mooring buoy.

Runs through the current of Agate Pass are always a challenge. While the currents on the southbound leg of the run appeared close to what was predicted, the current for the northbound run failed, leaving the boats to compensate with their 10% rpm variation on the throttles. The Port Orchard currents are always difficult to predict. The current tables call it weak and variable, but it isn't so. It is surprising what 2/10 or 3/10 of a knot can do to your predictions over a three or four mile run.

After an excellent dinner at the Seattle Yacht Club outstation, the awards were announced. There were some new names in the top three. New competitors, Dick Bennison and his wife Eva, representing Tacoma Yacht Club, placed third in their boat *Well Done*. They scored an excellent 0.61% error in this, their first IPBA competition. Along with Chuck Irwin, they are bringing cruiser navigation competition back at Tacoma Yacht Club after several years of fading interest.

In second place was the amazing team led by George Greg in *Noble*. Representing Poulsbo Yacht Club, George works with Bob and Pat Johnson, long time IPBA members, all three of whom are in their mid-80s. Their score was a very impressive 0.499% error. I guess experience *is* the best teacher.

Now, if you have been following cruiser navigation contests in this area, the winner will be no surprise. Dick and Sylvia Timmerman in their second-to-last competition with their 1929 Lake Union Dreamboat, *Vagabond*, came away with top honors, scoring a 0.405% error. With that kind of powerhouse performance, the Poulsbo Yacht Club Team walked away with the team trophy.



Dick and Sylvia Timmerman win the Stimpson Trophy

Cruiser navigation competition is a great sport. If

(Continued on page 6)

IPBA Update
(Continued from page 5)

you enjoy boating and a competitive challenge, this could be your sport. Find out more at www.IPBAlogracing.org or contact me, Bill Anderson at BigBillAsr@EarthLink.net. We would love to have you in the International Powerboat Association.

Bill Anderson
Commodore
International Powerboat Association

Impossibilities

Impossibilities in the world:

1. You can't count your hair.
2. You can't wash your eyes with soap.
3. You can't breathe when your tongue is out.

Put your tongue back in your mouth, you silly person.

Ten things I know about you:

1. You are reading this.
2. You are human.
3. You can't say the letter "P" without separating your lips.
4. You just attempted to do it.
6. You are laughing at yourself.
7. You have a smile on your face, and you skipped No. 5.
8. You just checked to see if there is a No. 5.
9. You laugh at this because you are a fun-loving person, and everyone does it, too.
10. You are probably going to show this to others to see who else falls for it.

Steam vs. Sail

Your regular old yachtsman has a profound contempt for steam yachts. He considers that all the romance and pleasure of yachting consist in the uncertainties, dangers, and difficulties attending sailing.

He glories in the storms which compel the shortening of sail, the lying-to, the scudding before the wind under a stay-sail, and all the other vicissitudes which attend excess of wind; while, on the other hand, he takes dead calms, with sails idly flapping against the masts, and the reflection of his vessel in the mirror-like water, with philosophy and contentment, passing the long hours of inaction in spinning yarns and (possibly) drinking cocktails. This class of yachtsmen is slowly passing away and is being succeeded by men of more modern views.

Edward S. Jaffray, 1887

EXPERIENCED PREDICTED LOGGERS

Check out "Predicted Log Essentials"
Get the competitive edge!
Download for free on the NACA website:
www.predictedlog.org

NEW COMPETITORS

A quick read - "Enjoy Log Racing"
Each helpful copy is full of facts and fun.
Download for free on the NACA website:
www.predictedlog.org

Art is all of a ship but the wood.
- Henry David Thoreau

Men live by events, and so they paddle.
- John Boyle O'Reilly

RMS Queen Mary

11/11/2012

Best 10 of first 11 contests entered

<u>Place</u>	<u>NACA#</u>	<u>Contestant</u>	<u>Boat</u>	<u>Assn.</u>	<u>Contests Entered</u>	<u>Total Points</u>	<u>Avg Points</u>
1	782	Dick Timmerman	VAGABOND	IPBAN	10	8892	889
2	755	George Jackman	SPECIAL EFFECT	SCCA	11	8770	877
3	919	Bob Lindal	SUZY Q	IPBAN	10	8486	849
4	933	David Weimer	JUST DESERTS	SDCA	11	8409	841
5	800	Garry Adalian	JONATHAN	SDCA	11	8394	839
6	937	Edward Denaci	MICROSHIP II	SDCA	11	8389	839
7	839	Fred Cole	MOUSE TRAP	IPBAN	10	8218	822
8	20	Tom Collins	MISTY SEA	SCCA	9	7774	864
9	936	Bob Ehlers	JB & ME	SDCA	11	7619	762
10	834	John Walker	PRIME TIME	SCCA	11	7252	725

St Petersburg Yacht Club Perpetual

11/12/2012

Best 4 of first 5 contests entered

<u>Place</u>	<u>NACA#</u>	<u>Contestant</u>	<u>Boat</u>	<u>Assn.</u>	<u>Contests Entered</u>	<u>Total Points</u>	<u>Avg Points</u>
1	755	George Jackman	SPECIAL EFFECT	SCCA	5	3878	970
2	933	David Weimer	JUST DESERTS	SDCA	5	3862	966
3	782	Dick Timmerman	VAGABOND (IPBA N)	IPBAN	5	3821	955
4	964	Burnell Blockhus	LOLITA	SMBPF	5	3795	949
5	370	Mike Henry	PEACHY KEEN	IPBAN	5	3544	886
6	959	Bruce Cullen	CAROLINE II	IPBAN	5	3512	878
7	6253	Clint Chapin	SOJOURN	IPBAN	5	3490	872
8	839	Fred Cole	MOUSE TRAP	IPBAN	5	3453	863
9	937	Edward Denaci	MICROSHIP II	SDCA	5	3439	860
10	883	Fay Baynard	PHASE OUT	SPYC	5	3416	854

Herbert L. Stone Perpetual

11/12/2012

Highest points from 1st, 2nd, 3rd place finishes in first 7 contests entered

<u>Place</u>	<u>NACA#</u>	<u>Contestant</u>	<u>Boat</u>	<u>Assn.</u>	<u>Contests Entered</u>	<u>Total Points</u>	<u>Avg Points</u>
1	755	George Jackman	SPECIAL EFFECT	SCCA	7	6455	922
2	20	Tom Collins	MISTY SEA	SCCA	6	5153	859
3	883	Fay Baynard	PHASE OUT	SPYC	6	4987	831
4	933	David Weimer	JUST DESERTS	SDCA	5	4850	970
5	782	Dick Timmerman	VAGABOND (IPBA N)	IPBAN	5	4821	964
6	964	Burnell Blockhus	LOLITA	SMBPF	6	4798	800
7	937	Edward Denaci	MICROSHIP II	SDCA	5	4552	910
8	6302	Bob Godfrey	UNREEL	SMBPF	6	3842	640
9	6252	Bill Winberg	BILLY THE KID	SCCA	4	3335	834
10	990	Mickey Scheinbaum	THREE FLAGS	SMBPF	5	3224	645

George M. Codrington Perpetual

11/12/2012

Best 5 of first 7 contests entered

<u>Place</u>	<u>NACA#</u>	<u>Contestant</u>	<u>Boat</u>	<u>Assn.</u>	<u>Contests Entered</u>	<u>Total Points</u>	<u>Avg Points</u>
1	933	David Weimer	JUST DESERTS	SDCA	7	4850	970
2	782	Dick Timmerman	VAGABOND (IPBA N)	IPBAN	7	4821	964
3	755	George Jackman	SPECIAL EFFECT	SCCA	7	4811	962
4	919	Bob Lindal	SUZY Q	IPBAN	7	4653	931
5	937	Edward Denaci	MICROSHIP II	SDCA	7	4552	910
6	839	Fred Cole	MOUSE TRAP	IPBAN	7	4505	901
7	964	Burnell Blockhus	LOLITA	SMBPF	6	4498	900
8	20	Tom Collins	MISTY SEA	SCCA	7	4402	880
9	370	Mike Henry	PEACHY KEEN	IPBAN	7	4373	875
10	883	Fay Baynard	PHASE OUT	SPYC	6	4370	874

COASTAL EXPLORER TROPHY* (NACA Championship)Best eight of first eight or 9 contests entered

11/11//2012

Page 1 of 3

Place	NACA#	Contestant	Boat	Assn.	Contests Entered	Total Points	Avg Points
1	782	Dick Timmerman	VAGABOND	IPBAN	9	7479	935
2	839	Fred Cole	MOUSE TRAP	IPBAN	9	7150	894
3	919	Bob Lindal	SUZY Q	IPBAN	9	7130	891
4	755	George Jackman	SPECIAL EFFECT	SCCA	9	7088	886
5	20	Tom Collins	MISTY SEA	SCCA	9	7023	878
6	933	David Weimer	JUST DESERTS	SDCA	9	7006	876
7	937	Edward Denaci	MICROSHIP II	SDCA	9	6801	850
8	800	Garry Adalian	JONATHAN	SDCA	9	6578	822
9	370	Mike Henry	PEACHY KEEN	IPBAN	8	6285	786
10	936	Bob Ehlers	JB & ME	SDCA	9	6222	778
11	984	Steve Hazlerig	SOLARA	IPBAN	8	6188	774
12	6253	Clint Chapin	SOJOURN	IPBAN	9	5821	728
13	619	Don Larson	TEWASI	IPBAS	8	5772	722
14	6240	Jim Korzetz	FREEDOM (IPBA N)	IPBAN	8	5708	714
15	6252	Bill Winberg	BILLY THE KID	SCCA	9	5579	697
16	2095	David Padgett	SLIP AWAY	IPBAN	8	5506	688
17	825	Jeff Calabrese	LIVING WELL	SDCA	9	5498	687
18	834	John Walker	PRIME TIME	SCCA	9	5460	682
19	704	Pete Healy	JINKIES	SCCA	9	5077	635
20	2081	James Lonergan	CASA DEL PERRO DOS	SDCA	9	5076	634
21	981	Michael Elovitz	LOVIT	SDCA	9	5068	634
22	6211	Steve Brett	PRINCESS MOKIHANA	IPBAS	8	5009	626
23	883	Fay Baynard	PHASE OUT	SPYC	6	4987	831
24	944	Bill Anderson	THE TILLIE	IPBAN	8	4879	610
25	994	Marty Muir	KACHINA	SDCA	9	4838	605
26	805	Ralph Salerno	ANCORA	SDCA	8	4837	605
27	964	Burnell Blockhus	LOLITA	SMBPF	6	4798	800
28	842	Team Klett/Elbon	KLETTITAT	IPBAN	7	4752	679
29	6275	Jim Vanantwerp	SARA B	IPBAN	7	4725	675
30	959	Bruce Cullen	CAROLINE II	IPBAN	5	4245	849
31	348	Dean Lentgis	KALOS FILOS	IPBAN	6	4233	706
32	990	Mickey Scheinbaum	THREE FLAGS	SMBPF	7	4124	589
33	591	Robert Erly	LOIS	SDCA	6	4005	668
34	857	Jerry Downer	NOR'WESTER	IPBAS	7	3866	552
35	6302	Bob Godfrey	UNREEL	SMBPF	6	3842	640
36	6215	George Gregg	NOBLE	IPBAS	6	3742	624
37	677	Bill Doherty	ALDEBARAN	SDCA	7	3693	528
38	958	Jim Anderson	FIDALGO	IPBAS	6	3580	597
39	9206	Ken Griffining	LOON'S CALL	SCCA	7	3535	505
40	982	George Babbit	GENERAL QUARTERS	IPBAS	7	3481	497
41	607	Jeff Swan	CLAIRE MARIE	IPBAN	4	3275	819
42	806	Michael Fontaine	TUFFY	SDCA	9	3178	397
43	909	Scott Strandjord	REDEMPTION	IPBAN	4	3083	771
44	942	Ivan Cox	VOYAGER (SCCA)	SCCA	4	3081	770
45	6012	John Burwell	GAVIA	IPBAN	4	2978	744
46	995	Wally Guthrie	KICKIN' BACK	SPYC	5	2886	577
47	6126	Ed Kutchma	PACIFIC PIXIE	SCCA	4	2863	716
48	980	Fred Weider	WOS IST LOS	SDCA	6	2731	455
49	6272	Bill Herman	SUMMER HOURS	IPBAN	4	2723	681
50	818	John Murphey	STURDY GAL	IPBAN	3	2523	841
51	2016	Dan Frank	MOON SHINE	IPBAN	6	2332	389
52	6219	Dennis Sheehan	NAUTI GAL	IPBAS	4	2188	547

COASTAL EXPLORER TROPHY* (NACA Championship)

11/11/2012

Best eight of first eight or 9 contests entered

Page 2 of 3

<u>Place</u>	<u>NACA#</u>	<u>Contestant</u>	<u>Boat</u>	<u>Assn.</u>	<u>Contests Entered</u>	<u>Total Points</u>	<u>Avg Points</u>
53	6291	Richard Hall	WINE DOWN	IPBAS	3	2099	700
54	6297	Jan Lawson	KISS	SCCA	3	2053	684
55	6212	Mike Burton	ROYAL CHINOOK	IPBAS	3	1919	640
56	2057	Bonnie Diefendorf	TIME OUT	PLRANC	2	1866	933
57	6280	John Guthrie	LADY ELIANE	SPYC	4	1834	458
58	6241	Phil Osterli	NORDIC SPIRIT	IPBAN	3	1818	606
59	6301	Bill McCormick	INAMORATA	SCCA	3	1726	575
60	6216	Chuck Irwin	LAUGHIN PLACE	IPBAS	3	1702	567
61	6239	Daryl Creighton	FREE SPIRIT	SCCA	5	1698	340
62	6210	Glenn Ryan	AMNESIA	IPBAN	3	1597	532
63	941	Tom Chandler	RM II HYDE	SCCA	4	1577	394
64	824	Steve Green	FULLMOON	SCCA	2	1574	787
65	9232	Sheri Green	IT'LL DO	SBCCA	3	1502	501
66	6226	Dick Bennison	WELL DONE	IPBAS	2	1451	726
67	9129	Frank Sullivan	VALKYRIE	SCCA	2	1432	716
68	6336	Alex Lorenz	TIRELESS	IPBAN	3	1300	433
69	4058	Terry Baker	CHOPPERS II	IPBAN	3	1216	405
70	6334	Terry Brothers	PANACEA	SDCA	3	1072	357
71	732	Bill Findley	ANOTHER PROMISE	SCCA	3	1071	357
72	9231	Bernie Marrington	ROMANCE	SBCCA	3	1066	355
73	9209	Don Decock	NIFTY FIFTY	IPBAN	2	1023	512
74	889	Owen Ritter	OUTBOUND	IPBAN	1	996	996
75	6234	Ken Case	RAZZLE	IPBAN	2	933	466
76	6122	Don Murrary	KARA ANNE	SPYC	1	933	933
77	9228	Kelly Stocklin	ALFIE	IPBAN	2	932	466
78	803	Fred Schreuder	FAIR LADY	PLRANC	2	917	458
79	2071	Noel Diefendorf	TIME OUT	PLRANC	2	917	458
80	9200	Heber Weller	STEELE'N'AWAY	SPYC	2	818	409
81	2018	Chuck Silvernail	SOLMAR	IPBAN	1	808	808
82	6236	Rich Dixson	TWO DADS DREAM	IPBAN	1	788	788
83	6248	Greg Abell	SEABELL	IPBAN	1	776	776
84	9229	Ryan Bales	ZORRO	IPBAN	1	773	773
85	6255	Gene Paxton	EVENTIDE	IPBAS	1	770	770
86	703	Edward Hedges	JO-SEA	IPBAN	1	758	758
87	9211	Bill Raleigh	VAGABOND BILL	IPBAN	1	740	740
88	6315	Jim Veres	VAGABOND JIM	IPBAN	1	721	721
89	9210	Bill Halley	SUMMER HOURS-HALLEY	IPBAN	1	703	703
90	915	John Rosendale	MISTIC BLUE	IPBAN	1	676	676
91	3424	Rob Bruins	OCEAN PEARL	IPBAN	1	657	657
92	9227	Chris Williamson	HARBOR CRUISER	IPBAS	1	647	647
93	6103	Del Hoffman	SIDNEY ROSE	IPBAN	1	630	630
94	9218	Michael Khniotskiy	NOR'WESTER	IPBAS	1	615	615
95	458	Leonard Warden	DIAMOND JACK	IPBAN	1	611	611
96	9220	Mike Laird	SARAH B	IPBAS	1	601	601
97	6124	Jim Gould	MUTUAL FUN	SMBPF	2	600	300
98	6319	Dave Sokoloski	SUN BEAR II	IPBAN	1	593	593
99	9224	Brandy Richter	LAUGHIN' PLACE	IPBAS	1	584	584
100	6316	Jim Mitchell	PENALTY BOX	IPBAN	1	575	575
101	9205	Michael Lawler	TRAVELIER	SCCA	1	556	556
102	6326	Kevin Kohler	EAGLE	IPBAS	1	552	552
103	6258	Mark Backstrom	SEABOOPLAY	IPBAN	1	538	538
104	9203	Phil Ventura	KNOT TOO SHABBY	SCCA	1	528	528

COASTAL EXPLORER TROPHY* (NACA Championship)

Best eight of first eight or 9 contests entered

11/11/2012

Page 3 of 3

<u>Place</u>	<u>NACA#</u>	<u>Contestant</u>	<u>Boat</u>	<u>Assn.</u>	<u>Contests Entered</u>	<u>Total Points</u>	<u>Avg Points</u>
105	6323	Tom Huddleston	WHISTLER	IPBAS	1	526	526
106	6310	Bart Johnson	LIL' TROOPER	IPBAN	1	520	520
107	9225	Darrell Holland	EAGLE	IPBAS	1	489	489
108	6321	David Cordodor	QUICK CHARGE	IPBAS	1	488	488
109	6282	Ron Naselow	TRIVIAL PURSUIT	IPBAN	1	483	483
110	6339	Matthew Radigan	MAGIC MOMENTS	SCCA	1	471	471
111	6142	Charles Billings	NOBSKA	IPBAN	1	469	469
112	9222	Alexander Spencer	FIDALGO	IPBAS	1	458	458
113	6312	Bob Lewis	LIBERTY	IPBAN	1	450	450
114	6232	John Carrosino	RENDEZVOUS	IPBAN	1	447	447
115	891	Leo Longenecker	REALITY CHECK	IPBAN	1	432	432
116	9213	Reed Smith	FINDANGO	IPBAN	1	428	428
117	9226	Richard Wallace	WELL DONE	IPBAS	1	426	426
118	9223	Ryan Lunceford	PICKLE	IPBAS	1	413	413
119	2150	David Garland	LUCKY DOG	IPBAN	1	410	410
120	6320	Barry Chunn	IMAGINE	IPBAS	1	395	395
121	5005	Ray Norton	IMPRESSIONS	IPBAN	1	394	394
122	6238	Gary Dove	MOON SHINE	IPBAN	1	392	392
123	9208	Bruce Clickenbeard	SIESTA	SCCA	1	376	376
124	6246	David Miller	SEA NYMPH II	IPBAS	1	375	375
125	6274	Terynia Smith	PATTY WAGON	IPBAN	1	373	373
126	9215	Val Watson	PHANTOM	IPBAS	1	363	363
127	9216	Scott Miller	SEA NYMPH II	IPBAS	1	356	356
128	6251	Loretta Pieretti	SISSY DOLL	IPBAN	1	355	355
129	2118	Mike Eaton QMC	OLD MAN IV	IPBAN	1	338	338
130	9212	Gary Ritzman	DHARMA	IPBAN	1	337	337
131	9217	Conner Hourihan	IMAGINE	IPBAS	1	332	332
132	9221	Donald Park	MISTY ROSE	IPBAS	1	319	319
133	9214	Tom & Kelli Dion	JOINT VENTURE	IPBAS	1	300	300
134	9204	Barry O'Neil	ANAM CARA	SCCA	1	300	300
135	9207	Tom Cunningham	USUAL SUSPECTS	SCCA	1	300	300
136	9230	Tom Green	DIASTOLE	IPBAN	1	300	300
137	9219	Beth Irwin	LAUGHIN' PLACE	IPBAS	1	300	300
138	6305	Jennie Dahlby	FRIENDSHIP II	IPBAN	1	300	300
139	6104	Ray Mazza	CURRENT AFFAIR	IPBAN	1	300	300
140	6237	Maurice McGough	QUOTIDIAN	SPYC	1	300	300

NACA BLAZER BULLIONS

NACA has gold embroidered blazer bullions with our flag on a gilt-edged 2 1/2" medallion.

Really good looking!

Only \$25 (includes shipping and handling)

Call Bob Ehlers

619.222.9446

NACA FLAGS

NACA flags are available for purchase.

Show off your membership in NACA.

Only \$25.00 each.

Call Bob Ehlers

619.222.9446

To stand at the end of the bridge,
rolling out over the cataracts roaring below,
and to swing back, and out again,
watching the ship's head decline into a hollow
of the seas, and then to clutch the saddle
as she reared with a sudden twist
and swing above the horizon,
and in such a vast and illuminated theatre,
was to awake a new virtue in life.

-H. M. Tomlinson,
on the joy of seagoing



Encourage a friend to join the North American Cruiser Association...*Today!*

Membership in NACA keeps everyone who is interested in Predicted Log Contests well informed about the sport throughout North America. Competitors from thirteen member Associations compete for National Trophies simply by competing in their local contests. The champion from each organization competes in the North American Invitational, hosted by a different organization each year.

Your dues entitle you to receive *Cruiser Log* (the NACA newsletter), the Annual Yearbook that lists all NACA members and their addresses, along with information about the member organizations, and the NACA Handbook that details the national rules for Predicted Log Contests as well as the perpetual trophies.

To join the North American Cruiser Association or renew your membership, complete this membership form and mail it with your check to:

Bob Ehlers, Acting Executive Secretary
1135 Alexandria Drive
San Diego, CA 92107

Name _____

Mailing Address _____

City _____ State _____ Zip Code _____

Spouse Name _____

Home Telephone _____

Office Telephone _____

Yacht Club or Other Boating Organizations _____

Boat Name _____

Please include your check payable to: NORTH AMERICAN CRUISER ASSOCIATION

ANNUAL DUES: \$10.00

CONTRIBUTION: \$ _____

TOTAL ENCLOSED: \$ _____

*Your contributions enable us to maintain the perpetual trophies and provide other services to our Member Associations.



Cruiser Log

The Newsletter of North American Cruiser Association

Bob Ehlers, Acting Executive Secretary
1135 Alexandria Drive
San Diego, CA 92107



Get Serious!

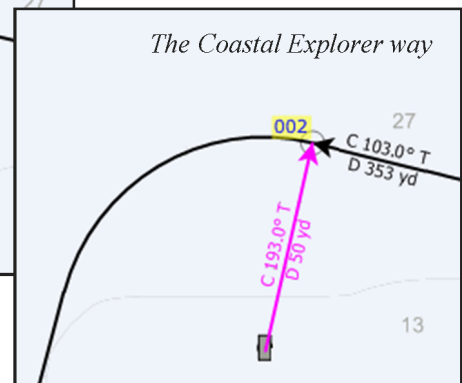
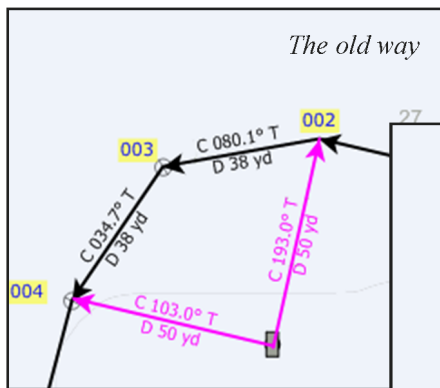
With the only navigation software that includes features designed specifically for Predicted Log Racers

Navigation Software Just Got a Lot Better!

Use Coastal Explorer to help plan your next Predicted Log Race. Our exclusive curved waypoint transition creates more accurate routes and Estimated Time of Arrival because the intended route is depicted and calculated for each route leg as a curve rather than a straight line. Set a port and starboard turning radius for your vessel and Coastal Explorer will do the rest! Copy a planned route directly into MS Excel for further manipulation and fine tuning. These features combined with Coastal Explorer's easy to use, uncluttered user interface make it the ideal choice for your next race and all your cruising needs.

COASTAL EXPLORER

20% discount for NACA members



Visit www.rosepointnav.com for more information and a free trial. Or call 425-605-0985

